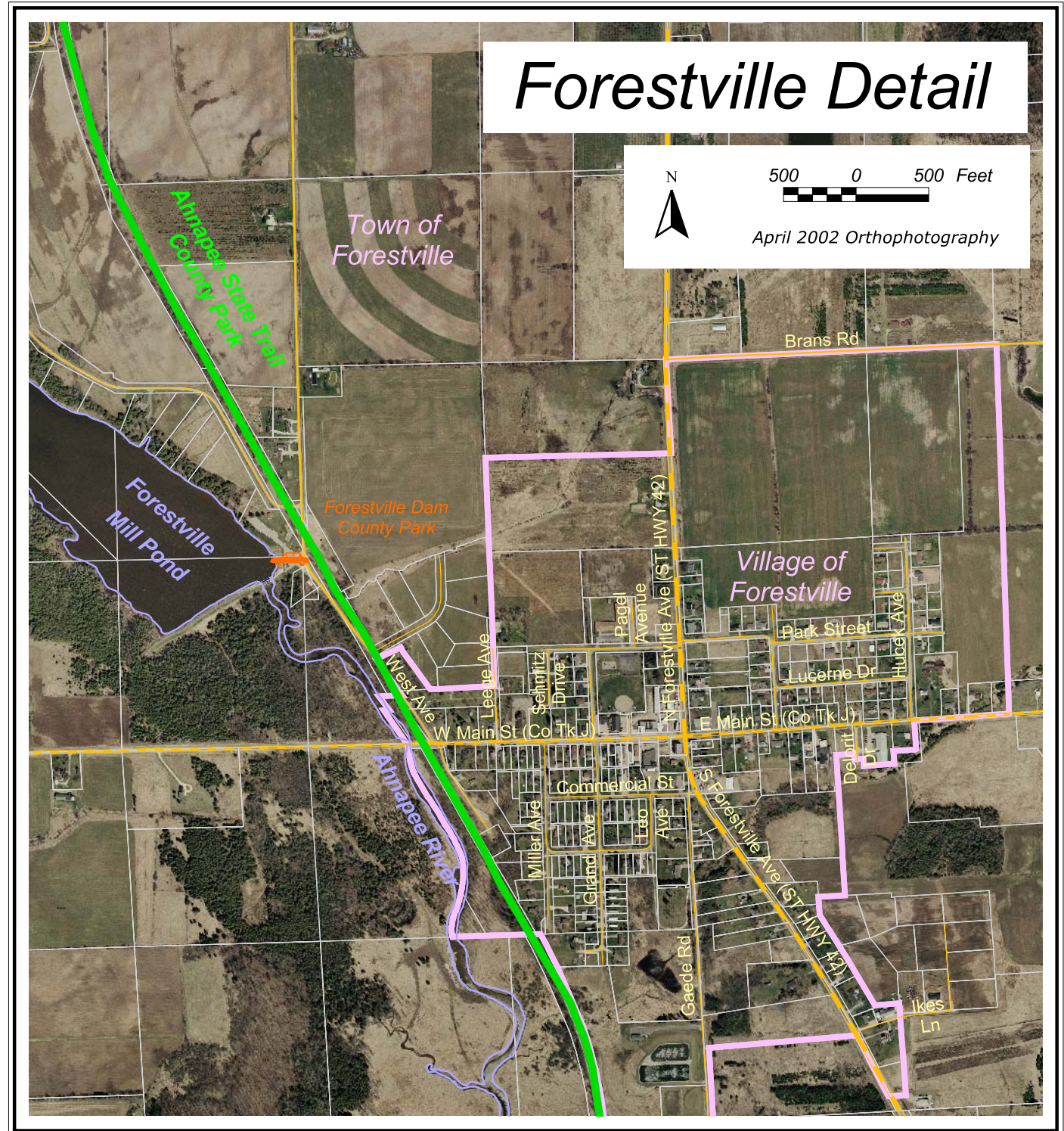




The Ahnapee State Trail spans about 30 miles between Casco, Algoma, Forestville and Sturgeon Bay. Forestville can be used as an access point or resting stop, as it is located approximately 11 miles Southwest of the Sturgeon Bay trail head and 5 miles northwest of Algoma. The Ahnapee State Trail is a multi-use trail, with an 8 to 10 foot wide surface comprised of packed limestone screenings. In the summer, people can walk, jog or run, ride bicycles, ride horses, or drive horse drawn buggies on the trail. In the winter snowmobiles and cross-country skiers share the trail.



## Detailed Maps Legend

-  **Trail-Use Parking**
-  **Ahnapee State Trail**
-  **City Trail Extension**
-  **State Highway**
-  **County Highway**
-  **Town Road**
-  **City or Village Street**
-  **Private Road or Street**
-  **Shore**
-  **Stream**
-  **Tax Parcel**
-  **Municipal Boundary**